



1060NM

Laser Sculpture Machine

User Manual



Model: SC-1060

Welcome to use SC-1060 laser sculpture system. The system is 1060nm diode laser platform offering painless and permanent weight loss for all types.

Index

Welcome	
Page.....	1
1. Attention.....	3
2. Package list.....	4
3. Technical specification	5
4. Machine Installation	6-7
5.Operation.....	8-12
6.Treatment Notice.....	13
7.Maintenance.....	13
8. Warranty Notice	13



Note: Please do not open the machine before you read this user manual!



1. Attention:

1. SC-1060 Laser Sculpture Machine could emit the high-intensity infrared laser beam. Please follow some operation regulations:

- Please do not point the laser at the eyes directly.
2. Please make sure to be familiar with the structure and manual before operation.
 3. Laser Sculpture Machine is only allowed to be used by people who had enough safety and operation training.
 4. If this is the first time you use Laser Sculpture Machine, please read the User Manual carefully before operation.
 5. Please do not use the Hair Removal Machine in the environments which contain flammable anaesthetic and oxidized gas, such as N_2O and O_2 . Some material, such as cotton or wool textile, will be ignited in the environment which is rich in oxygen during Hair Removal machine running.

2. Package List

Part	Quantity	Note
Laser Machine	1 SET	Laser machine with case
Hand Piece	4 PCS	
Hand Piece Connector	4 PCS	
VAC Plug Wire	1 PC	
Water Valves	2 PC	Used for adding or drawing off water
Funnel	1 PC	Used for adding water
User Manual	1 SET	Sent by email



4 pieces of hand piece



4 pieces of hand piece connectors



2 pieces of water valves



Funnel

3. Technical Specifications



Model	SC-1060
Wavelength	1060nm
Working Pulse	CW
Hand Piece	4 Pieces
Spot Size of Hand Piece	60mm*35mm
Input VAC	200~240VAC / 50-60Hz
Power Density	0.5W-2W/cm ²
Treatment time	25 minutes
System Cooling method	Freon Compressor +Water+Air+Fans
Interface Language	English or Other Language
Screen	10.4' Color Touch Screen
Aluminum Case Dimension	130x68x88cm

4. Machine Installation

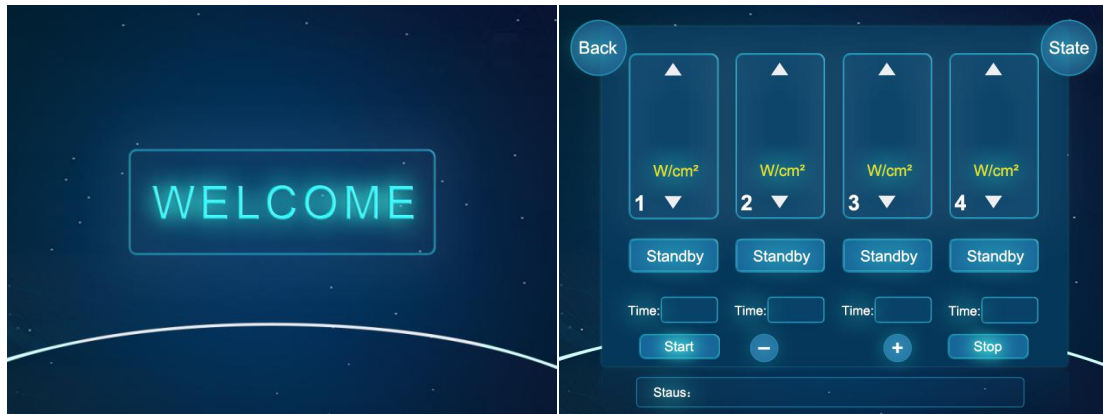
Do not power up the system before you read this manual!

1. Please check all the parts in package list to confirm all are received.
2. Add water to water tank. Please confirm your machine model. SC-1060 needs DI-water, otherwise laser handle piece is easily broken. Operation way is as follows.
 - A. Connect water valves to water inlet and water drain at the same time.
 - B. Connect the funnel to the water valve of water inlet, then add water. When water overflows from the water drain, it means water is enough.
 - C. After operation, you need to take water vavels away.



Water Valve

3. Check the handle piece if it is in good condition.
 - 1) Please confirm if your wall-plug is 200-240VAC. If it is 90-120VAC, please use voltage transformer.
 - 2) Find a 10A 220-250V VAC plug wire (you may need an European Model for the wire), connect to the back panel.
 - 3) Check if the emergency button is pressed down. If pressed down, please release it.
 - 4) Use the key to start the system and you will enter the welcome interface of the system as below:



Welcome Interface

Operation Interface

- 5) Press the welcome interface, you will enter the second page as the right picture above. Till now, you are successfully enter sculpture system. Please follow the "5. OPERATION" chapter to start the treatment.
- 6) For any emergency situation, please press the emergency button (Red Mushroom) to shut down the laser immediately.
- 7) After treatment, if you want to turn off the system, you can use the key to shut it down directly. And turn off the air switch at the back panel. You can remove the VAC plug if necessary.

5.Operation



Operation Interface

1. When you enter into "Operation Interface", you will see parameters that you need to set. Please see the meaning of red remarks.

1) 1,2,3 and 4 represent power density of 4 hand pieces. You can adjust from 0.5~2W/cm² by .

2) 5,6,7 and 8 represent state of 4 hand pieces. Once the hand piece touches skin well, "Standby" will become "Ready".

3) A,B,C and D represent treatment time of 4 hand pieces. Treatment time is from 1~50 minutes. Generally, we suggest 25 minutes. Meanwhile, it's countdown setting, treatment time will reduce along with treatment process, when it shows 0, it means treatment is over.

4) When you press 9 (Start), you can start treatment. When at least 1 hand piece is in ready condition, you can press "Start".

5) When you press 10 (Stop), the treatment is over.

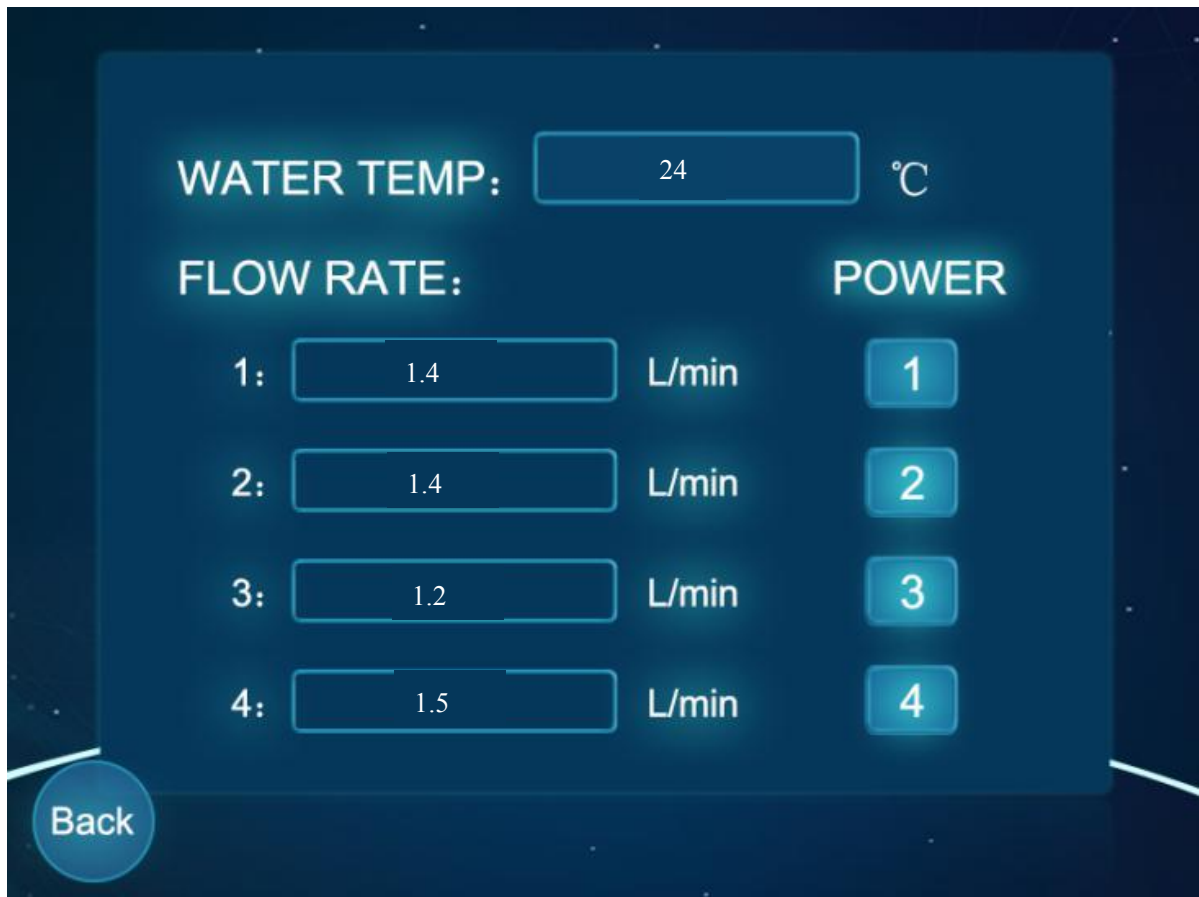
6) 11 will show state of machine.

Please see an example of ready state. When the machine starts treatment, “Ready” will become “Working”.



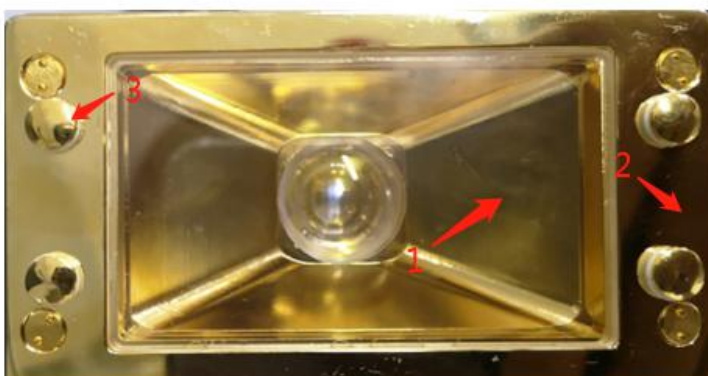
7) When you press “Back”, it will back to “Welcome” interface.

8) When you press “State”, you will see the “System State Interface”.



System State Interface

- 9) "System State Interface" will show water temperature and water flow rate of 4 hand pieces.
- 10) Power 1: 1 second for treatment, 2 seconds for cooling
Power 2: 2 seconds for treatment, 3 seconds for cooling
Power 3: 3 seconds for treatment, 3 seconds for cooling
Power 4: 6 seconds for treatment, 5 seconds for cooling
Generally, we suggest Power 1.
- 2. Hand piece



- 1 represents treatment spot size, 60*35mm. 2 represents skin cooling part.
- 3 represents skin-touch identification.



Hand piece connector is used to fix hand piece with skin tightly. The operator needs to fix hand piece connector with customer's skin first, then connect hand piece with connector.



Ready



Working

There are four skin sensors in each hand piece, and each sensor has an indicator light. When the hand piece touches skin well, all 4 indicator lights will become green, then the machine system will show "Ready".

When all 4 indicator lights become blue, the machine is in "Working" status.

3. Different state of machine.

Time out	Treatment is over.
High tem	The cooling water temperature range should be between 15~28°C. If it is higher than 34°C, the laser will stop. Please wait

1060nm Sculpture Machine

	till water temperature going down. The warning will disappear, and system can be set again.
1 Water flow rate low	It represents low water flow rate of 4 hand pieces. If the water flow rate ,which shows at "System state interface", is just low, not "0 L/min". Please first check along the water tube to confirm whether there is any jam and water connectors of hand piece are well locked. Secondly, open the water inlet at the back of machine to make the air pressure balance between the inside and outside of water circle system. If the water flow rate shows "0 L/min". Please first check whether the water pump are working. Or contact our company to ask for help.
2 Water flow rate low	
3 Water flow rate low	
4 Water flow rate low	
Laser power failure	It means the laser hand piece or laser power supply broken. Please ask factory or seller to solve this problem.

4. Please follow those parameter during operating the machine:

Model No.	SC-1060
Laser Cooling Liquid	DI-water
Water Tank Volume	6L
Handle Piece Flow Rate	2L/min+-10%
Cooling Water Temperature	23~30℃
Working Environment Temperature	15~28℃
Environment Moisture	<70%

6. Treatment Notice

1. The treatment of sculpture needs experienced professionals.
2. Please notice that this is a high power laser device and if the patients feel very painful, please stop the laser and check if there is anything happening to the patients' skin. Adjust it as a proper power that the patients can stand to do the treatment.
3. Don't apply cooling gel before treatment.
4. The handle piece is better to be operated at SCANNING mode. It is faster for treatment.
5. Never shot the laser pulses to eyes, or watch the laser directly.

7. Maintenance

1. For DI water, please check the degree of ions every month to make sure deionized 2-20 $\mu\text{s}/\text{cm}$.
2. The machine must be operated in a room with air-conditioner. The room temperature is better $<28^{\circ}\text{C}$.
3. The environment temperature can not go below ZERO, or the ice may damage the water tanks and water channels inside the machine and the handle piece.
4. Do not bend the tube of the hand piece too hard, or this may cause water flow rate low warning.
5. Do not plug in & out the handle piece connectors frequently. This may cause water leakage or water jam or bad electrical connections.
6. Do not shot the laser at random targets, or it may cause burning or fire.
7. Always keep the handle piece with the holder on the main machine when you don't use it. Otherwise, the condensing water may flow back to the laser stack in handle piece, so that cause laser failed.

8. Warranty Notice

Please take necessary protections for the operation of the machine and handle piece, and notice that following situations can **not be warranted**:

1. Operation the system without water.
2. Power up the system without connecting the handle piece.
3. Regular drops of the handle piece.
4. Wrong input VAC.
5. Other manual operating mistakes.