



(PICOFLASH)

Super Picosecond Laser (500PS)

New-generation laser equipment for pigments removal!



PICO LASER VS NANO LASER

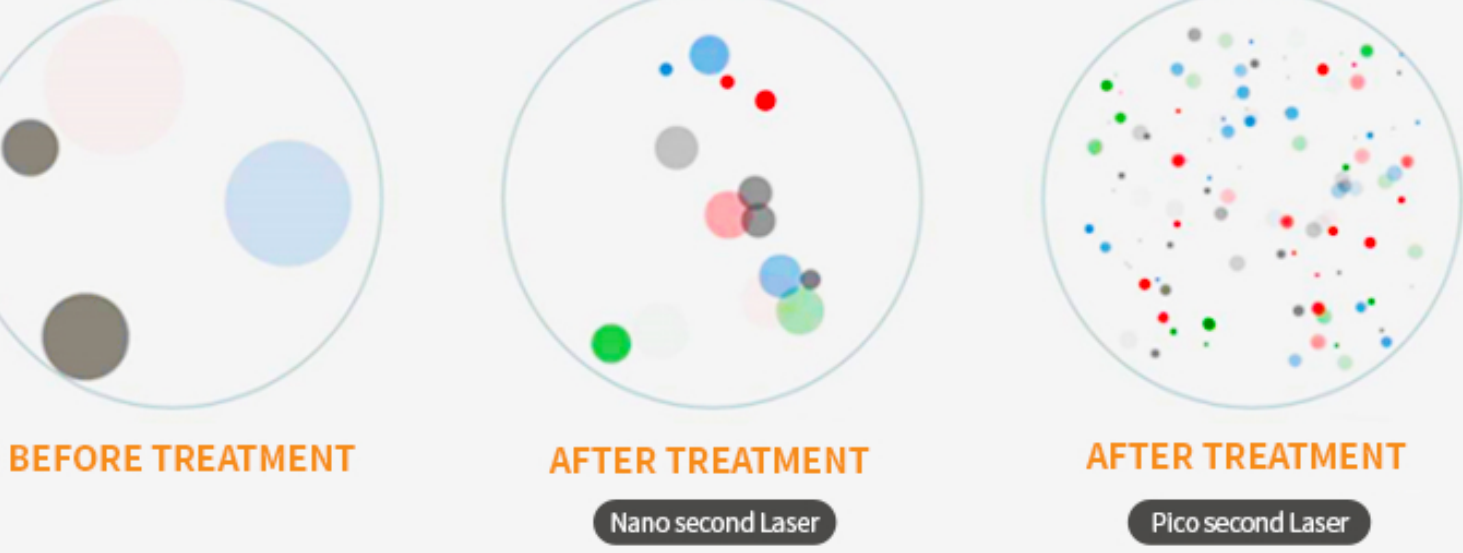
Picosecond laser is approximately 10 times faster than nanosecond laser!



Pico Laser with the ultra-short pulse duration and high power will break pigmentation into powder in a moment but Nano Laser into the small granules.

Pico Laser removes pigment fragments faster, more effective, fewer treatment sessions

Pico Laser removing pigment fragments is much safer, less risk of side effects.

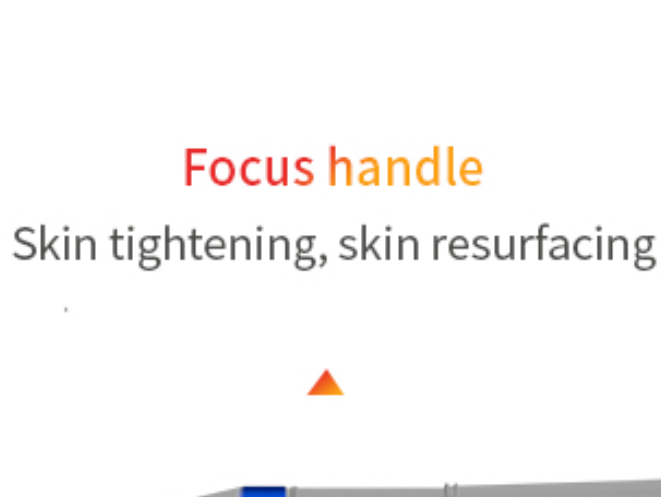


KOREA JOINT ARM

- 》 (Less energy Loss)
- 》 (360 degree rotation)
- 》 (Uniform output energy)
- 》 (Adjustable spot size 2-10mm)
- 》 (Multiple treatment handles optional)

VARIETY OF HANDLES OPTIONAL

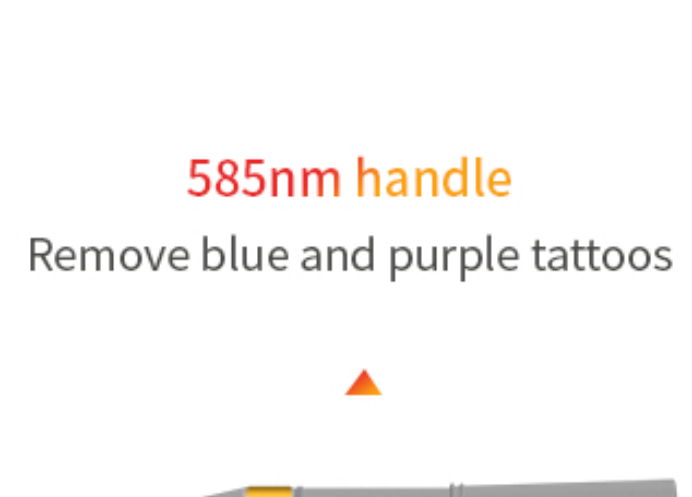
- Standard probes: 1064nm for black tattoos, sun spots, coffee spots, chloasma, skin rejuvenation; 532nm for tattoo red, brown, yellow, Ota, freckles, port wine stains.
- Optional probes: 650nm (green tattoos removal); 585nm (blue and purple tattoos removal); Fractional probe (treatment of large pores, acne marks)



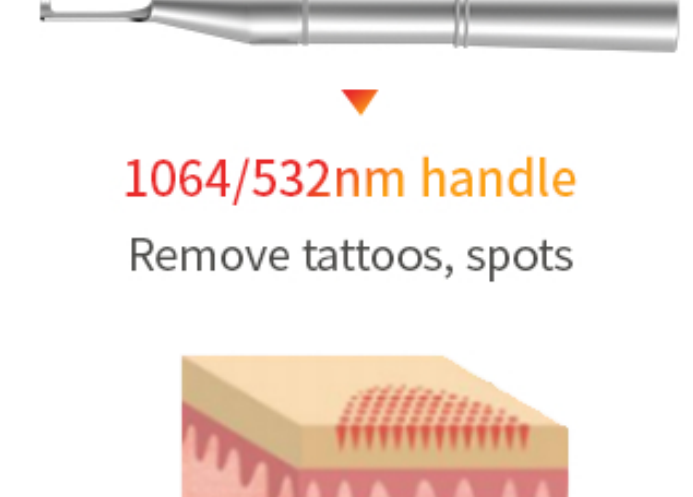
Focus handle
Skin tightening, skin resurfacing



650nm handle
650nm wavelength is used on greens



585nm handle
Remove blue and purple tattoos



1064/532nm handle
Remove tattoos, spots

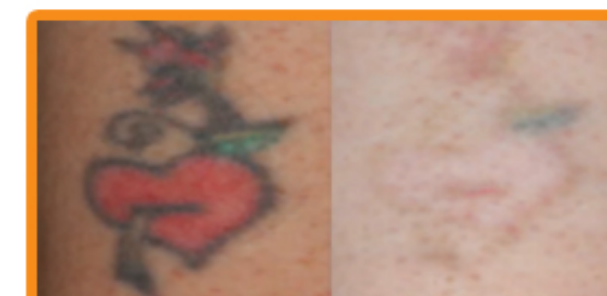
2000PS MOCROCHIP

Sealed package, high reliability, polarization-stable



Tattoo Removal

Tattoos removal (tattoos of all colors, eyeliner, lip line, etc)



Pigment Melasma

Pigments of the epidermis and dermis (sun spots, coffee spots, chloasma, etc)



Skin Rejuvenation

Skin whitening and wrinkle removal



Skin problems

Acne scar, ota nevus, blue nevus, black nevus



“FEATURES

1. Solid-state laser generator & MOPA amplification technology, the energy is more stable and effective.
2. Multiple treatment handles optional to meet the different treatment needs of our clients.
3. Three treatment modes: SP, LP, PTP, perfect for all complicated types of pigmentation.
4. 7-joint articulated laser arm imported from Korea, transmission efficiency up to 85%.
5. Laser lamps and lenses are imported from the USA (real pulse duration 500PS tested by oscilloscope).
6. “Flat-top” mode, uniform energy density: energy can be delivered efficiently to treatment area, maximizing the effect and minimizing damage to surrounding tissues.

TECHNICAL PARAMETERS



Wavelength	1064nm, 532nm (585nm, 650nm optional)
Output energy	1300mj@1064nm, 550mj@532nm
Pulse duration	600PS@1064nm, 500PS@532nm
Spot size	2mm ~ 10mm (adjustable)
Frequency	1HZ ~ 10HZ
Treatment mode	SP, PTP, LP
Voltage	110V/ 220V
Package size	108*101*51cm & 83*26*14cm
Package weight	84.1kg & 6kg